

Farm



Focus on April • Issue 2

WANTED! ANY SERVICEABLE BIKES FOR OUR VOLUNTEERS. ANY LUMPS OF STONE FOR THE STONE CARVERS TO WORK ON... ANYTHING BUT GRANITE!

Farm Manager's Introduction

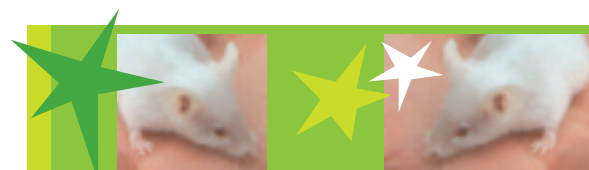


Welcome to issue two of our newsletter, designed to keep you up-to-date on all that's been happening over the last month. If you would like to receive a copy through the post, or via e-mail, please let us know in the Farm Office. Happy Reading! Chris Pounds – Farm Manager

Why Volunteer?

A film crew from the **Media Trust** have been on site this last month, interviewing **The Farm's Volunteers**. As part of a community channel programme, the production team have put together a short film showing the benefits of volunteering.

This will be shown nationally and includes a short interview with the Federation of City Farm's Chief; **Jeremy Isles**. The Farm will have its own DVD copy of the film available for anyone who wants to find out more about volunteering.



Mice are the stars

New arrivals at The Farm, **Persil and Daz** (yes they're white!), starred in **CBB's "Smile"** programme last week. The two, six-week-old mice were very well behaved according to our livestock worker, Helen. Since their debut, both mice have declined numerous interviews, although they are considering a Hollywood offer to star in the new film **Dangermouse!** Their mum says stardom won't change them!!

Back to Earth Scheme

January saw the start of the Farm's training program. The program is run in partnership with **Springboard Hackney**. Trainees gain a foundation training certificate for their practical work at the Farm and support with numeracy, literacy, IT and career choices at Springboard.



Well Done!

A few worthy mentions this month.....

Congratulations to:- **Amanda Brooks** and **Rachel von Goetz** for both getting into Agricultural Colleges, Sparsholt and Plumpton, this September.

Craig for doing such a terrific job on the meeting room – assisted by **Eddie**, and to the **Unsung Hero's of the garden** who've worked tirelessly on making it look so good this spring.

The first round of trainees have just completed their time at the Farm. **Stacy, Luke** and **Ozell** have been working hard in snow and rain for most of January and February. Most noticeable of their efforts are the new decked area for the meeting room (check it out if you're having a party) and new turf in the Farm's garden. The program is ideal for any young people who want to learn construction, landscaping and horticulture, or want help and guidance with their choice of career. This project has been funded by the **Jack Petchy Foundation, Tudor Trust** and **Abbey Charitable Trust**.





1 Goldsmiths Row • London • E2 8QA • Tel: 020 7729 6381
 hackneycityfarm@fsmail.net • www.hackneycityfarm.co.uk
 Registered Charity 291211 • Limited Company 1883734

A living community resource

April • the season for • spring greens • carrots • rhubarb • broad beans
 morel mushrooms • rosemary • spinach • wild garlic • strawberries • kale

Shoreditch Trust Canal Carnival

The Farm was chosen as the starting point for a canal carnival parade on Saturday 23rd April. Amid the bustle of the **Free Form Arts Workshop**, where local young people prepared parade decorations, visitors were serenaded by live accordion music. After refreshments provided by **Frizzante**, the 300 strong parade set off to **Whiston Road IT Centre**, led by some top drumming as well as two Giraffes from the **Notting Hill Carnival**. The day, organised by **Shoreditch Trust** to promote healthy living, proved to be a great success.



Back on four wheels

For the first time in 7 years, The Farm has its own transport. In recent years we have been lucky enough to be able to use the big red Steppings Stones van, as well as the Sure Start electric van. Both have been vital in enabling us to attend shows, move animals, and bring in building materials. Thanks to funding from the **Abbey Charitable Trust** and **Selfridges Department Store**, we have been able to buy a small white transit van.

Being a diesel, we are looking at alternative fuel options; a well known environmental option is to re-use a cooking-oil mix. We're hoping to increase our environmental commitment by utilising the waste oil produced in the kitchen – how about that... a green white van with a garlic scent!



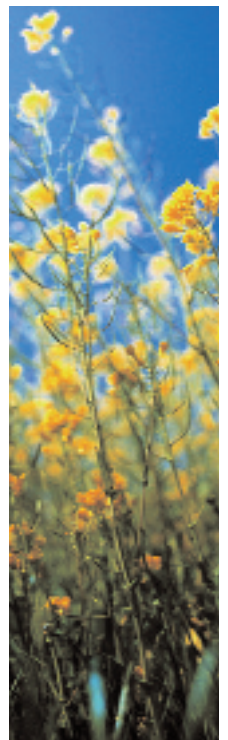
FUNDING NEWS



Great news from the **Living Spaces Fund** (a funding initiative set up by the Office of the Deputy Prime Minister – ODPM), the Farm has been awarded **£25,000** to develop some of the front garden and paddock area.

The funding will be used to establish a herb growing enterprise with rainwater harvesting and a solar powered irrigation system. The Farm has become one of Reuters named charities, and in addition to receiving a **£2,000** donation just before Christmas, we have just been given a further whopping **£3,000!** Some of this will be used to build a new Animal Demonstration Room in the farmyard for children. Thank you to all our generous friends at Reuters.

We have also applied to the **Baring Foundation** for funding support towards future Farm strategy work. If successful, we hope to use a project consultant to help us produce a new Farm business plan as well as develop further training, volunteering and education opportunities – fingers crossed!



NEW COMPLIMENTARY THERAPIES AT THE FARM

Using the front part of the old charity shop (see last month's newsletter) we now have two complimentary therapies on offer:

Ana Verastegui offers Holistic Body Massage, Indian Head Massage and Onsite Massage on **Thursdays 10.00am – 6.00pm.**

To book appointments call Ana on 020 7502 2675 or 07818067557

Starting on the 20th May, and each Friday from 09:30am to 5:30pm, Rebekah Reeve-Jones (Consultant Medical Herbalist) will be practising at The Farm.

For further information you can contact Rebekah on 07931-917365, or email hecate-herbs@hotmail.co.uk



eco-logic

FOOD MILES. All the planes flying food into the UK, all the lorries driving it up and down the country and all the shoppers forced into their cars to get to the supermarkets, mean that the combined yearly emissions from food, transport and shopping in the UK alone is greater than the annual carbon dioxide output of Paraguay, Ethiopia, Georgia and Honduras. To make matters worse, some supermarkets now offer air miles on their loyalty cards meaning the more over-transported food you buy, the more you can fly! The Farm is a pick-up point for a 'low food miles Organic veg box scheme' run by Growing Communities. To find out more you can contact Growing Communities on 020 7502 7588 or grow.communities@btinternet.com, alternatively ask at the Farm for a leaflet.